



# **Edwards Aquifer Protection Program Conservation Easement Acquisition**

City Council A Session

Item #29

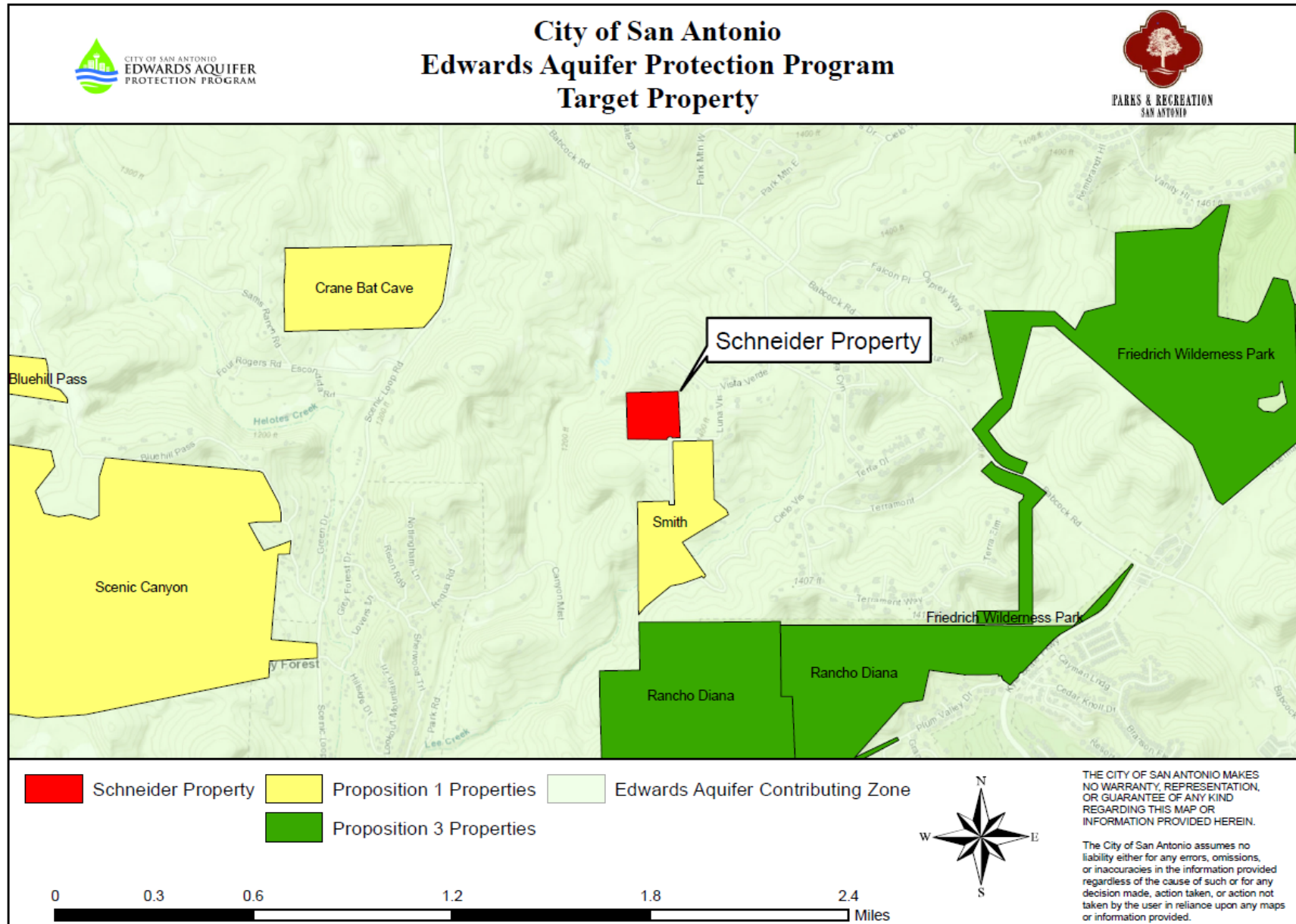
October 20, 2022

Parks and Recreation Department

# Conservation Easement Acquisition

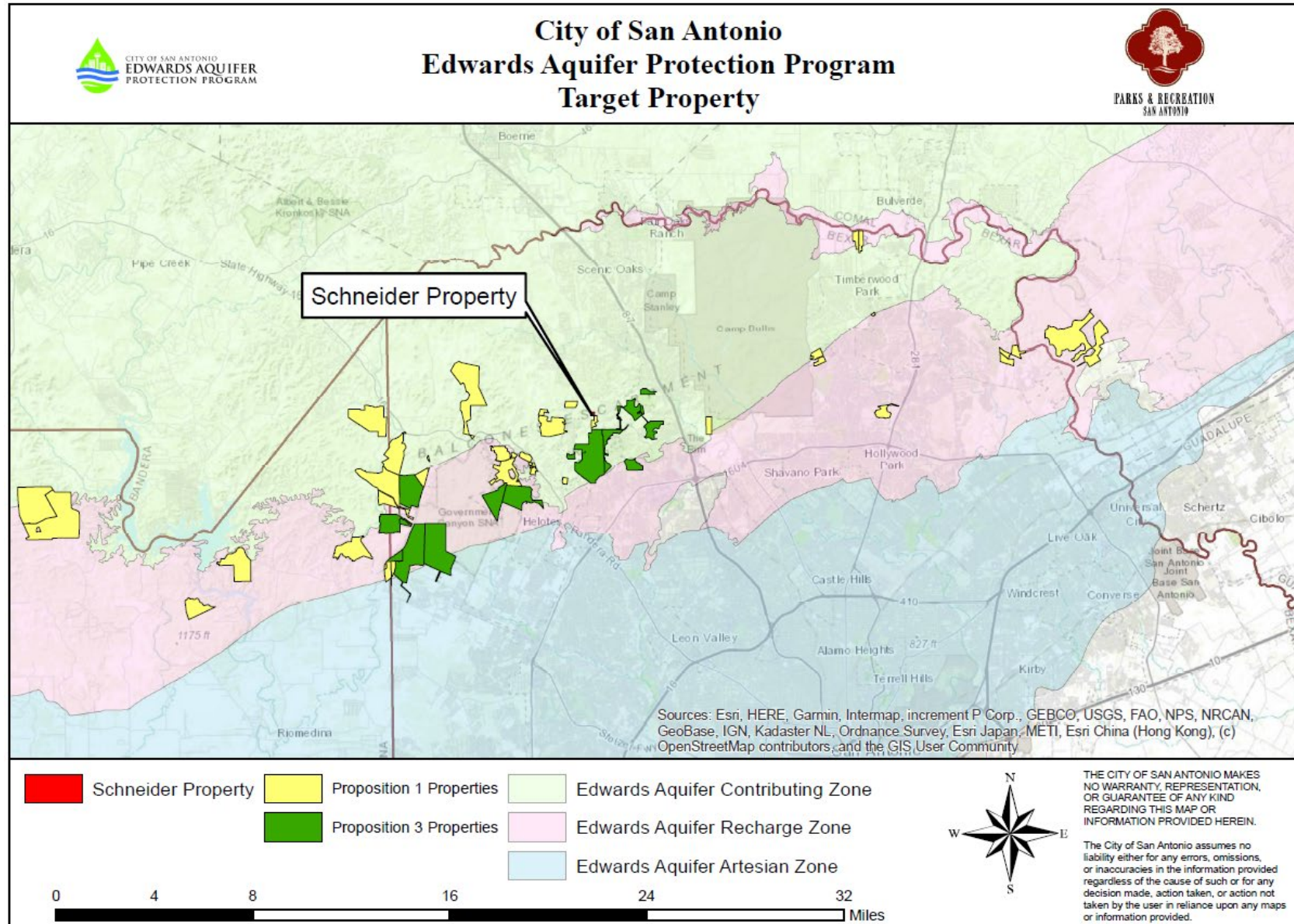
Property	County	Acres	Cost
Schneider Property	Bexar	14.99	\$384,455.35

# Increase of 14.99 Protected Acres in Bexar County





# Total Land Protected = 175,119 acres



# Acquisition Benefits

- Property located over the Edwards Aquifer Contributing Zone
- Important recharge features on property
- Moderate quantity and high water quality benefits
- Results in increase of 14.99 acres





# Program Status

- 175,119 acres protected with approval of proposed acquisition
- 118 conservation easements acquired under Propositions 1 and 3
- \$100M approved in 2015 under Proposition 1 and fully collected in March 2021
  - \$90M approved for acquisition; \$10M remaining balance with approval of these acquisitions
    - ✓ 27,446 acres currently protected under 2015 Prop 1 program
  - \$10M approved for water quality projects; 11 projects funded
- 15 acquisition projects in FY 2022; 14 approved by Council and 5 closed to date
  - Remaining balance to carry program through Q1 FY 2023
    - ✓ 10 year \$100M acquisition program commences in FY 2023



# Recommendation

- Staff recommends approval